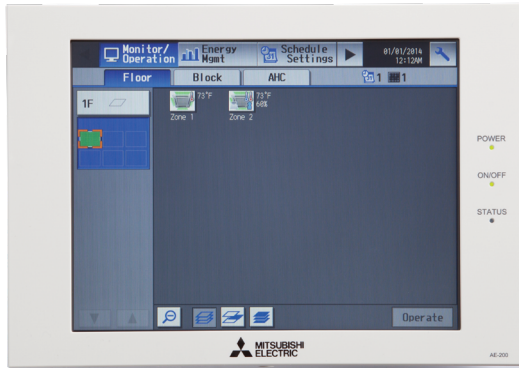


Job Name:

System Reference:

Date:



### AE-200A

- AE-200A is the Master Controller
- Master Controller can operate and monitor up to 50 indoor units
- Expansion Controllers can expand an AE-200A to operate and monitor up to 50 additional indoor units through the touchscreen or web browser
- Network up to three AE-50A or EW-50A to one AE-200A to allow the AE-200A to manage up to 200 indoor units

### OPTIONAL LICENSES

- LIC-BACnet Master: BACnet Function
  - Connected air conditioning units can be monitored and operated not only from the existing web browser or the AE-200/AE-50's LCD, but also from the building management system using the BACnet® communication protocol. See LIC-BACnet Data Sheet for more information.
- LIC-Charge Master: Energy Allocation
  - The apportioned electricity billing function is an electric energy apportionment system that apportions electric energy using input from electricity meters with a pulse generator function. The respective amounts of electric energy can be apportioned based on the operating status and capacity of each tenant. See LIC-Charge Data Sheet for more information.
- LIC-PWeb Master: Online Personal Browser
  - Allows tenant managers and general users to control their respective zone conditions via a networked PC, tablet, or mobile phone with or without local remote controllers installed in the space. See LIC-PWeb Data Sheet for more information.

### SPECIFICATIONS

- Supports dual set point functionality (connected equipment dependent)
- Displays:
  - CITY MULTI® compressor speed and hi/low pressure
  - AdvancedHVAC Controller (DC-A2IO) input/output status
  - Indoor unit free contact input/output status
  - Space temperature and humidity (from Smart ME or AI controller)
  - Error code (Can be emailed automatically to specified recipients)
  - Unoccupied setback up temperature range
- Functions
  - Hold function (temporarily disables schedules indoor unit model dependent)
  - Initial setting
  - Operation data back-up
- Permits or prohibits remote controller functions:
  - On/Off

- Change Operation Mode
  - Change Set Point Temperature
  - Filter Status
  - Change Fan Speed
  - Change Air Direction
  - External input/output signals can be used for batch operations such as Start/Stop and Emergency Stop (requires PAC-YG10HA)
  - Pulse signal input can obtain watt-hour meter, billing data and energy management data based on the cumulative number of pulse signal pulse signals directly input from a metering device
  - Temperature set point range limits can be set for local remote controllers
  - User defined indoor unit functions:
    - On/Off
    - Monitoring and Operation
    - Operation mode:
      - Auto\* (Dual or Single set point)
      - Heat
      - Fan
      - Drying
      - Setback\*
- Note: \*R2 Series only (connected equipment dependent)
- Temperature Setting
  - Fan Speed
  - Airflow Direction
  - Monitoring and Control:
    - CITY MULTI® indoor units
    - M & P Series units (requires M-Net adapter)
    - Lossnay® units
    - PWFY hydronic heat pump units
    - DIDO controllers
    - CITY MULTI® DOAS
    - Interlock setting enables integration of general equipment inputs/outputs and indoor units
  - Scheduling
    - Daily
    - Annually
    - Five pattern of weekly seasonal schedule
  - Twenty four scheduled events per day, indoor unit model dependent:
    - ON/OFF
    - Mode
    - Temperature Setting
    - Vane Direction
    - Fan
    - Speed
    - Operation Prohibits
  - Trend data:
    - Fan operation time
    - Thermo-on time
    - Set temperature
    - Room temperature
    - AI Controller temperature and humidity (requires PAC-YG63-MCA, 2 inputs total for each controller)
  - Memory back up via USB (universal serial bus)
  - Memory back up via LAN (local area network) port

# AE-200A - SPECIFICATIONS, CONT.

## AE-200A CENTRALIZED CONTROLLER

Item	Specifications		
Power Supply	Rated input	100–240 VAC ± 10%; 0.3–0.2 A 50/60 Hz Single-phase	
	Fuse	250 VAC 6.3 A Time-Lag type (IEC 60127-2S.S.5)	
M-NET power feeding capability		No specifications**Only an MN converter can be connected.	
Ambient conditions	Temperature	Operating Range	0° C to +40° C (+32° F to +104° F)
		Non-operating Range	-20° C to +60° C (-4° F to +140° F)
	Humidity	30% to 90% RH (no condensation)	
Weight	2.3 kg (5-5/64 lbs)		
Dimensions (W x H x D)	11-5/32 x 7-55/64 x 2-17/32 in. (284 x 200 x 65 mm)		
Installation conditions	Indoor only **To be used in a business office or similar environment		

## WEB BROWSER REQUIREMENTS

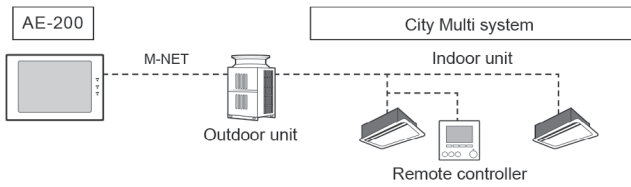
Item	Requirements
CPU	1 GHz or faster
Memory	512 MB or more
Screen Resolution	1024 x 768 or higher recommended
Compatible Browser	Windows® Microsoft® Internet Explorer 8.0 Microsoft® Internet Explorer 9.0 Microsoft® Internet Explorer 10.0 Microsoft® Internet Explorer 11.0 **Java execution environment is required. (Oracle® Java Plug-in Ver. 1.8.0_60) **Install Oracle® Java Plug-in that is appropriate for your operating system. When using a 64-bit Internet Explorer, install a 64-bit Java Plug-in. **The version of the Oracle® Java Plug-in can be verified by clicking [Java] in the Control Panel.
Onboard LAN Port or LAN Card	100 BASE-TX
100 BASE-TX	e.g., mouse

### NOTES:

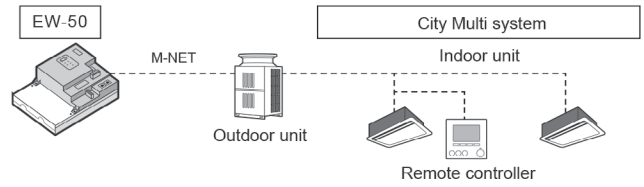
# MODEL: AE-200A - SYSTEM CONFIGURATION

## CONTROLLING 50 OR FEWER UNITS OF EQUIPMENT

1. AE-200



2. EW-50

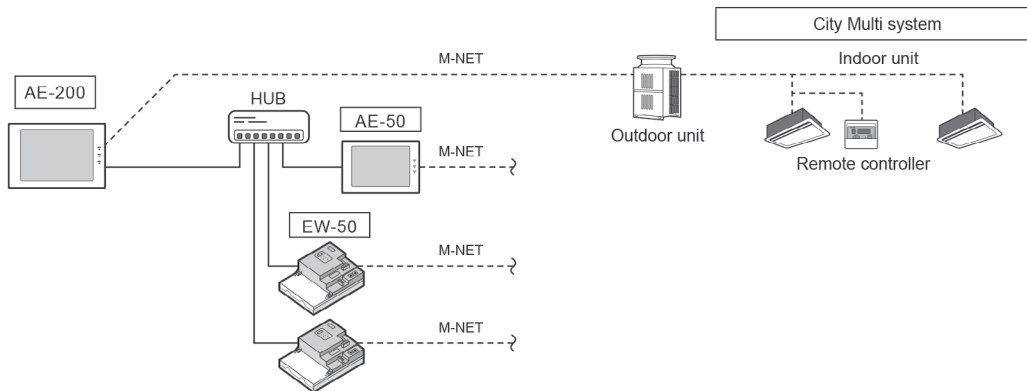


\*AE-200A is indicated as AE-200  
\*AE-50A is indicated as AE-50

## CONTROLLING MORE THAN 50 UNITS OF EQUIPMENT (WITH CONNECTION TO AN AE-200 CONTROLLER)

Note

AE-200 is required when using AE-50



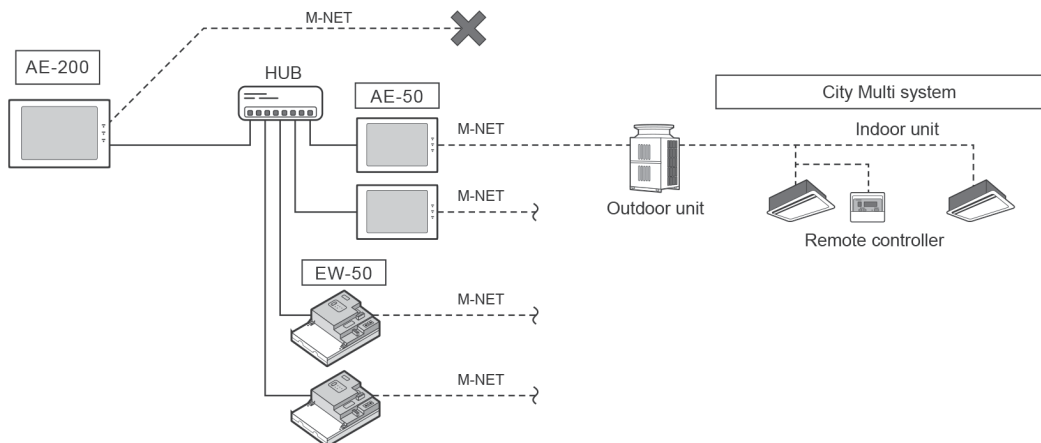
## WHEN USING AN APPORTIONED ELECTRICITY BILLING FUNCTION

Notes

AE-200 is required to use a billing function.

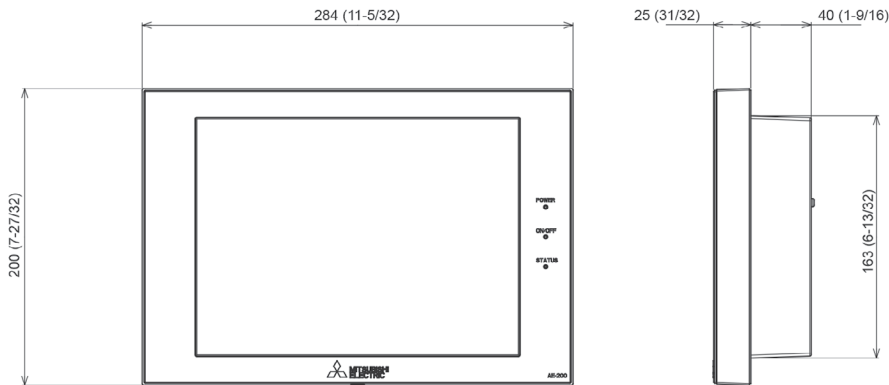
AE-200 M-NET cannot be used when a billing function is used

“Charge” license is required to use a billing function.

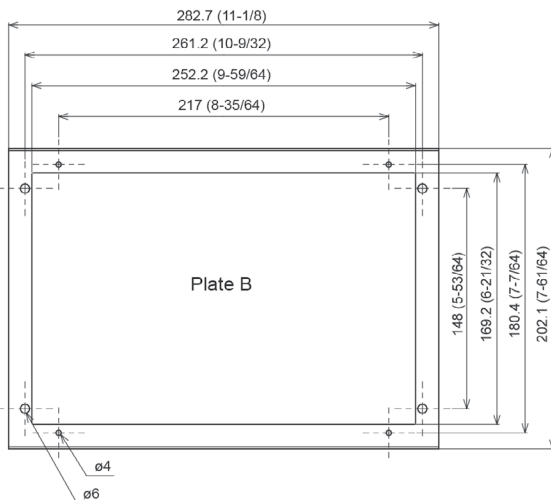
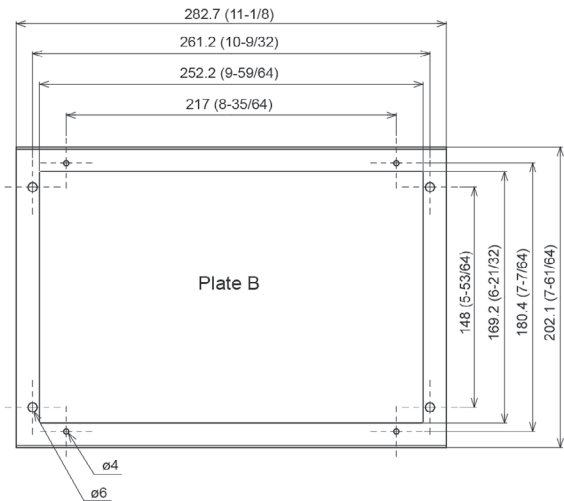
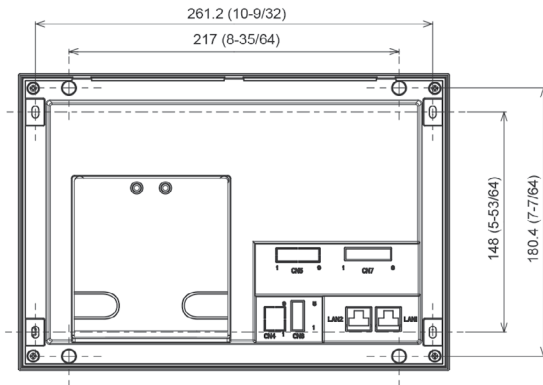
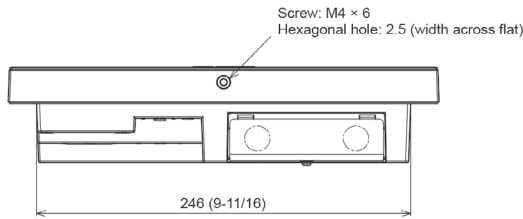


# AE-200A - DIMENSIONS

Unit: mm (inch)



\*AE-200A is indicated as AE-200  
\*AE-50A is indicated as AE-50



1340 Satellite Boulevard, Suwanee, GA 30024  
Toll Free: 800-433-4822 www.mehvac.com