

7-8-12 Error Code [6607] Error Source Address = ME Remote Controller

1. Error code definition No ACK error

2. Error definition and error detection method

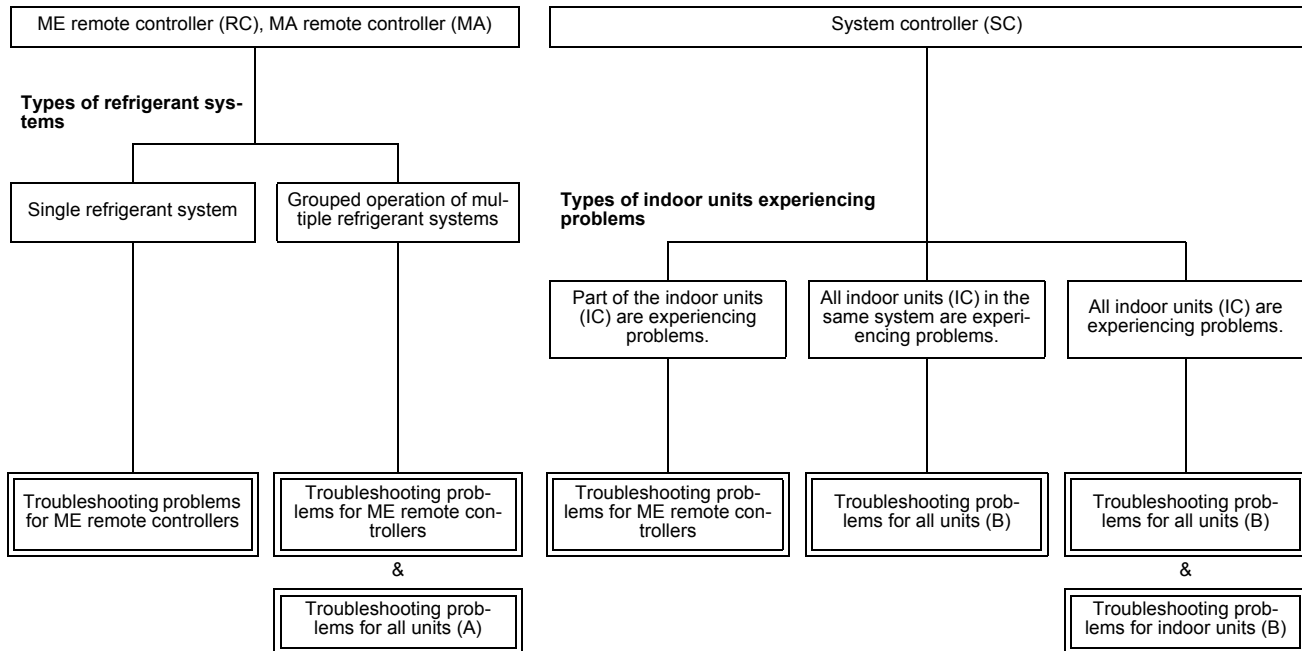
The error is detected when no acknowledgement (ACK signal) is received after the transmission. (eg. When the data is transmitted six times in a row with 30 seconds interval, the error is detected on the transmission side.)

Note

The address/attribute appeared on the display on the remote controller indicates the controller which did not provide the response (ACK).

3. Cause, check method and remedy

Error display



(1) Troubleshooting problems for ME remote controllers

Cause		Check method and remedy
(1)	Incidental cause	1) Turn off the power source of the outdoor unit for 5 minutes or more, and turn it on again.
(2)	Faulty transmission wiring at IC unit side.	2) If not, check the causes (2) - (5).
(3)	Faulty wiring of the transmission line for ME remote controller	
(4)	When the address of ME remote controller is changed in the middle of the operation	
(5)	ME remote controller failure	