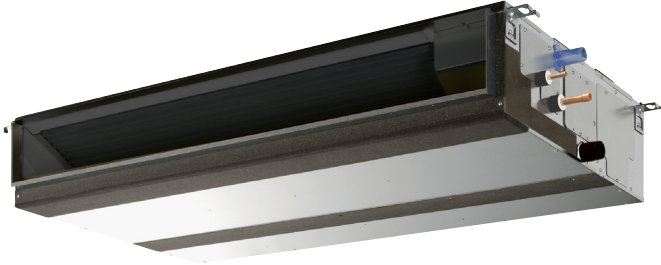


Job Name:	Date:
System Reference:	



GENERAL FEATURES

- Dual set point functionality
- Multiple fan speed settings
- Auto fan mode
- 9-7/8" (250mm) high for low ceiling heights
- Built-in condensate lift; lifts to 27-9/16" (700 mm)
- Ducted fan coil supporting multiple configurations for flexible installation

OPTIONS

- External Heater Adapter.....CN24RELAY-KIT-CM3
- Filter Box (Includes 2" MERV 13 filter).....FBM2-2

SPECIFICATIONS

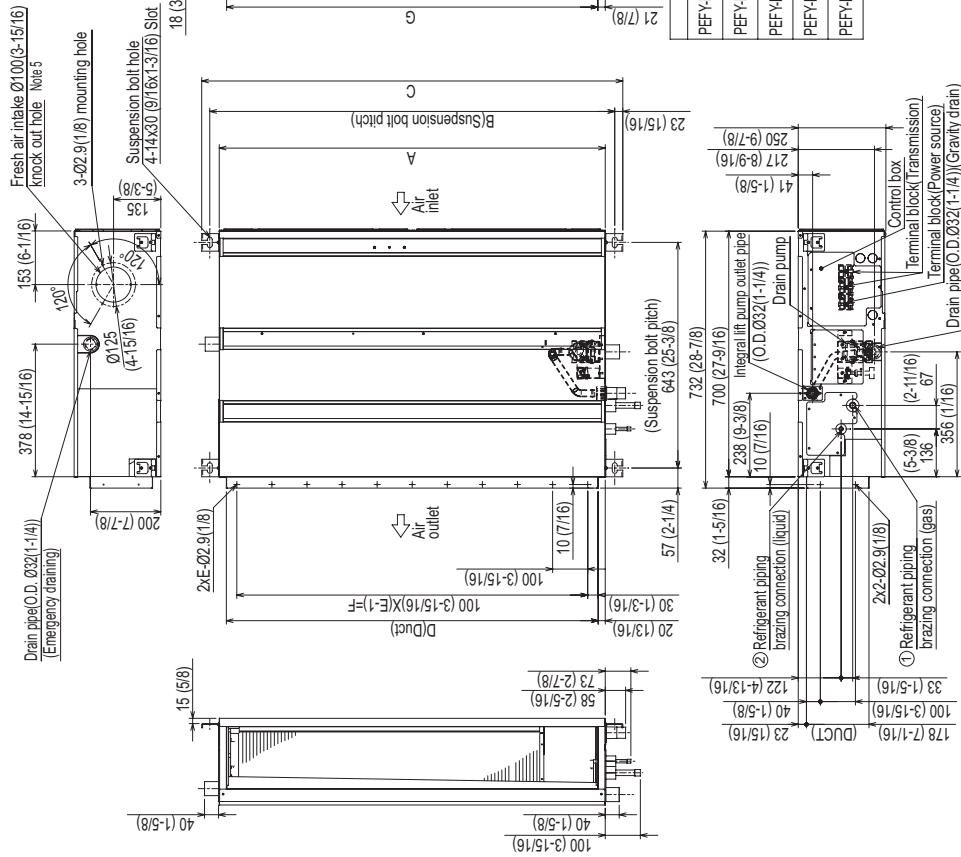
Capacity*	
Cooling.....	18,000 Btu/h
Heating.....	20,000 Btu/h
Power	
Power Source.....	208 / 230V, 1-phase, 60Hz
Power Consumption	
Cooling.....	0.11 kW
Heating.....	0.09 kW
Current	
Cooling.....	0.77 / 0.73 A
Heating.....	0.66 / 0.62 A
Minimum Circuit Ampacity (MCA).....	1.56 A
Maximum Overcurrent Protection (MOCP) Fuse.....	15 A
External Finish.....	
Galvanized-steel Sheet	
External Dimensions	
Inches.....	9-7/8 H x 35-7/16 W x 28-7/8 D
mm.....	250 H x 900 W x 732 D
Net Weight.....	
58 lbs. / 26 kg	
Coil Type.....	
Cross Fin (Aluminum Plate Fin and Copper Tube)	
Fan	
Type x Quantity.....	Sirocco Fan x 1
Airflow Rate (Low-Mid-High).....	424 - 512 - 600 CFM
External Static Pressure.....	0.14 - 0.20 - 0.28 - 0.40 - 0.60"WG (External static pressure is factory set to 0.20"WG)
Motor Type.....	DC Motor
Air Filter.....	
Polypropylene Honeycomb	
Refrigerant Piping Dimensions	
Liquid (High Pressure).....	1/4" / 6.35 mm (Brazed)
Gas (Low Pressure).....	1/2" / 12.7 mm (Brazed)
Drainpipe Dimension.....	
O.D. 1-1/4" / 32 mm	
Sound Pressure Levels	
Low-Mid-High.....	28 - 32 - 35 dB(A)

* Cooling / Heating capacity indicated at the maximum value at operation under the following conditions:
 Cooling | Indoor: 80° F (27° C) DB / 67° F (19° C) WB,
 Cooling | Indoor: Outdoor 95° F (35° C) DB
 Heating | Indoor: 70° F (21° C) DB,
 Heating | Outdoor 47° F (8° C) DB / 43° F (6° C) WB

Model: PEFY-P18NMAU-E3 – DIMENSIONS

Unit: mm (in)

- Note
1. Use an M10 screw for the suspension bolt (field supply).
 2. Keep the service space for maintenance at the bottom.
 3. This drawing is for PEFY-P24-27-30-36-48-54NMAU-E3 models, which have 2 fans. PEFY-P06-08-12-15-18NMAU-E3 models have 1 fan.
 4. If the inlet duct is used, remove the air filter (supplied with the unit), then install the filter (field supply) at the suction side.
 5. Heat air to 0°C (32°F) or higher when taking fresh air with a fresh air intake.



Model	① Gas pipe	② Liquid pipe	Unit:mm(in.)
PEFY-P06,08,12NMAU-E3	Ø12.7 (1/2)	Ø6.35 (1/4)	
PEFY-P15,P18NMAU-E3			
PEFY-P24,27,30NMAU-E3	Ø16.88 (5/8)	Ø9.52 (3/8)	
PEFY-P36,48NMAU-E3			
PEFY-P54NMAU-E3			

Model	A	B	C	D	E	F	G
PEFY-P06,08,12NMAU-E3	700 (27-9/16)	754 (29-11/16)	800 (31-1/2)	660 (26)	7 (23-5/8)	600 (23-5/8)	658 (25-15/16)
PEFY-P15,P18NMAU-E3	900 (35-7/16)	954 (37-9/16)	1000 (39-3/8)	860 (33-7/8)	9 (31-1/2)	800 (31-1/2)	858 (33-33/16)
PEFY-P24,27,30NMAU-E3	1100 (43-5/16)	1154 (45-7/16)	1200 (47-1/4)	1060 (41-3/4)	11 (39-3/8)	1000 (39-3/8)	1058 (41-11/16)
PEFY-P36,48NMAU-E3	1400 (55-1/8)	1454 (57-1/4)	1500 (59-1/16)	1360 (53-9/16)	14 (51-3/16)	1300 (51-3/16)	1358 (53-1/2)
PEFY-P54NMAU-E3	1600 (63)	1654 (65-1/8)	1700 (66-15/16)	1560 (61-7/16)	16 (64-1/8)	1500 (59-1/16)	1558 (61-3/8)



COOLING & HEATING

1340 Satellite Boulevard, Suwanee, GA 30024
Toll Free: 800-433-4822 www.mehvac.com

