

Job Name:	
System Reference:	Date:



PV FY-P18NAMU-E1

**GENERAL FEATURES**

- Multi-position design is suitable for any application requires no additional kits, even for downflow configuration
- Dual set point functionality
- Designed specifically for use with CITY MULTI® outdoor units
- Choice of three fan speeds for optimum comfort
- Highly efficient DC motor and a forward curved blower ensures quiet, consistent fan operation
- Optional relay kit provides functionality for two stage auxiliary heat (1 kit per stage), humidifier integration, or other custom applications
- Control board includes a condensate overflow switch connection
- Heavy-gauge steel cabinets with 1" fiberglass-free foam insulation with an R-4.2 insulation value
- Suitable for use in air handling spaces in accordance with Section 18.2 of UL 1995 4th Edition
- Tested in accordance with ANSI/ASHRAE Standard 193; less than 1% air leakage at maximum airflow

**ACCESSORIES:**

- Relay Kit.....CN24RELAY-KIT-CM3
- Fan Speed Indication Adapter.....PAC-735
- Electric Heat Kit.....for details see Electric Heat Kit Submittal

**SPECIFICATIONS:**

Capacity*		
Cooling	Btu/h	18,000
Heating	Btu/h	20,000

\* Cooling / Heating capacity indicated at the maximum value at operation under the following conditions:  
 Cooling | Indoor : 80° F (27° C) DB / 67° F (19° C) WB  
 Cooling | Outdoor : 95° F (35° C) DB  
 Heating | Indoor : 70° F (21° C) DB  
 Heating | Outdoor : 47° F (8° C) DB / 43° F (6° C) WB

Electrical		
Electrical Power Requirements	1-phase, 208 / 230V, 60Hz	
Minimum Circuit Ampacity (MCA)	A	3.00 / 3.00
Maximum Fuse Size	A	15

External Dimensions		
Height	In.(mm)	50-1/4 (1,275)
Width	In.(mm)	17 (432)
Depth	In.(mm)	21-5/8 (548)

Net Weight	Lbs.(kg)	113 (51)
External Finish	High-gloss polyester powder coated	
Coil Type	Cross Fin (Aluminum Plate Fin and Copper Tube)	

Fan		
Type x Quantity	Sirocco fan x 1	
Airflow rate (Low - Mid - High)	CFM	410 - 497 - 585
External Static Pressure	In. WG	0.30 / 0.50 / 0.80 (Selectable)
Motor Type	DC motor	

Air Filter	Polypropylene Honeycomb	
------------	-------------------------	--

Refrigerant Piping Diameter		
Liquid (High Pressure)	In.(mm)	1/4 (6.35) Brazed
Gas (Low Pressure)	In.(mm)	1/2 (12.7) Brazed

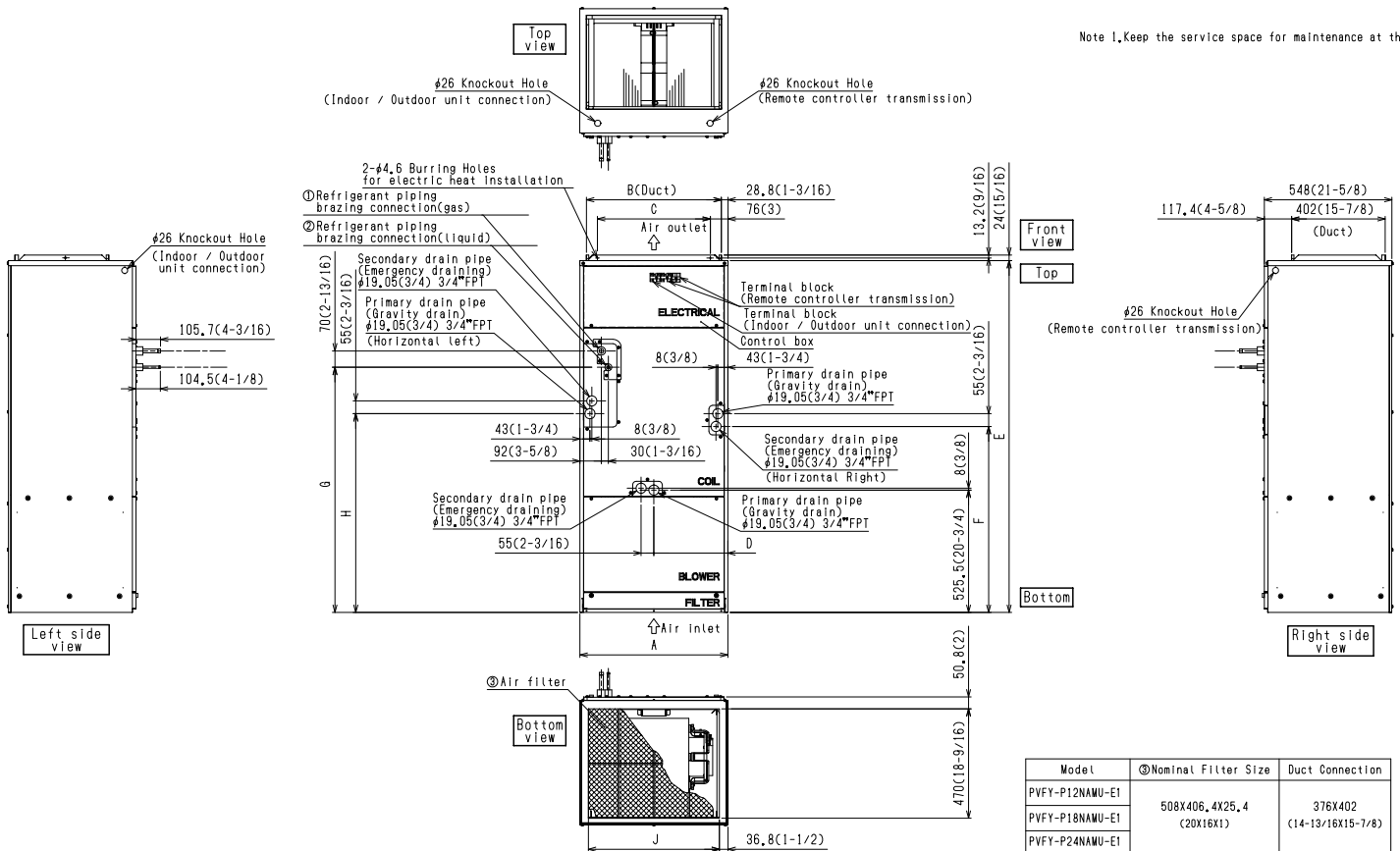
Field Drain Pipe Size	In.(mm)	FPT 3/4 (19.05)
-----------------------	---------	-----------------

Sound Data (Low - Mid - High) (measured in anechoic room)		
Sound Pressure Level	dB(A)	28 - 32 - 36

# Model: PVFY-P18NAMU-E1 – DIMENSIONS

Units: mm (in.)

Note 1. Keep the service space for maintenance at the front.



Unit:mm(in.)

Model	A	B	C	D	E	F	G	H	J	①Gas pipe	②Liquid pipe
PVFY-P12NAMU-E1	432	376	281	224	1275	680	823	735.5	360	φ12.7	φ6.35
PVFY-P18NAMU-E1	(17)	(14-13/16)	(11-1/8)	(8-7/8)	(50-1/4)	(26-13/16)	(32-7/16)	(29)	(14-3/16)	(1/2)	(1/4)
PVFY-P24NAMU-E1											
PVFY-P30NAMU-E1	534	477	382.6	266.5	1378	737	953.5	792	461	φ15.88	φ9.52
PVFY-P36NAMU-E1	(21)	(18-13/16)	(15-1/8)	(10-1/2)	(54-1/4)	(29-1/16)	(37-9/16)	(31-3/16)	(18-3/16)	(5/8)	(3/8)
PVFY-P48NAMU-E1	635	579	484.6	317.5	1511	798.5	1053	853.5	563		
PVFY-P54NAMU-E1	(25)	(22-13/16)	(19-1/8)	(12-1/2)	(59-1/2)	(31-7/16)	(41-1/2)	(33-5/8)	(22-3/16)		

Model	③Nominal Filter Size	Duct Connection
PVFY-P12NAMU-E1		
PVFY-P18NAMU-E1	508X406, 4X25, 4 (20X16X1)	376X402 (14-13/16X15-7/8)
PVFY-P24NAMU-E1		
PVFY-P30NAMU-E1	508X508X25, 4 (20X20X1)	477X402 (18-13/16X15-7/8)
PVFY-P36NAMU-E1		
PVFY-P48NAMU-E1	508X609, 6X25, 4 (20X24X1)	579X402 (22-13/16X15-7/8)
PVFY-P54NAMU-E1		



COOLING & HEATING

1340 Satellite Boulevard, Suwanee, GA 30024  
Toll Free: 800-433-4822 www.mehvac.com

